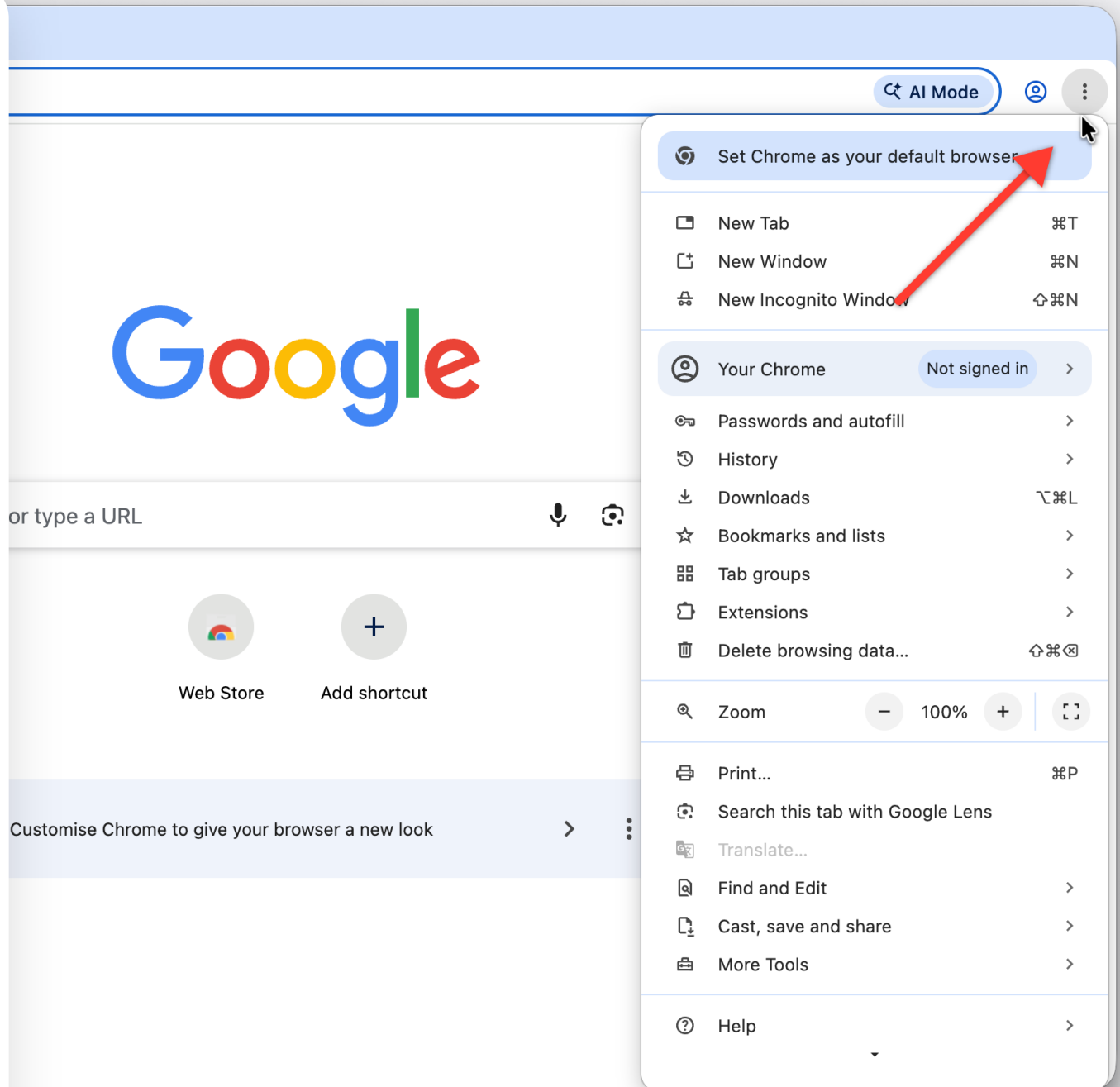


1 Step



ACTION & NOTES

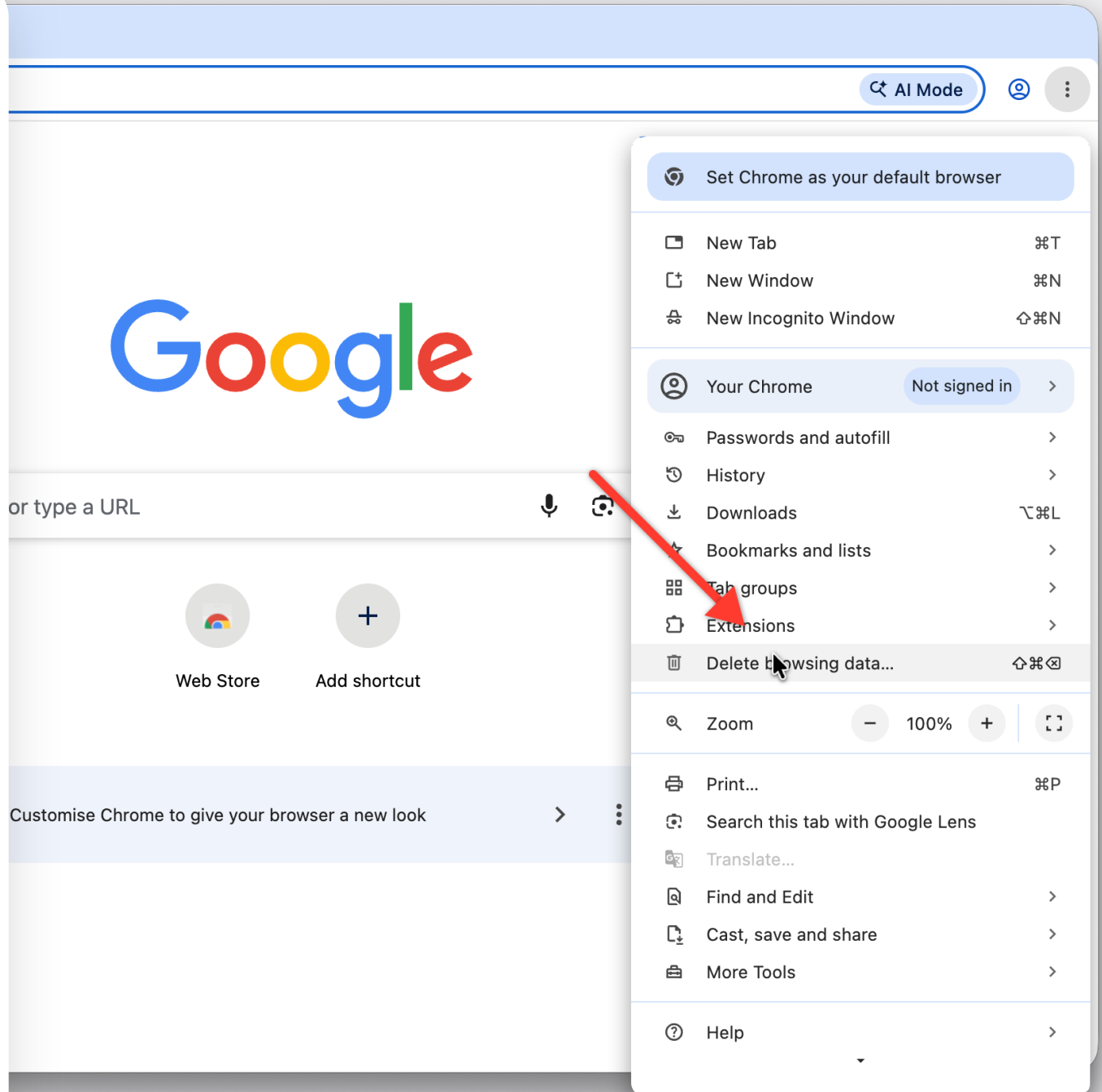
guide.pdf



2 Step



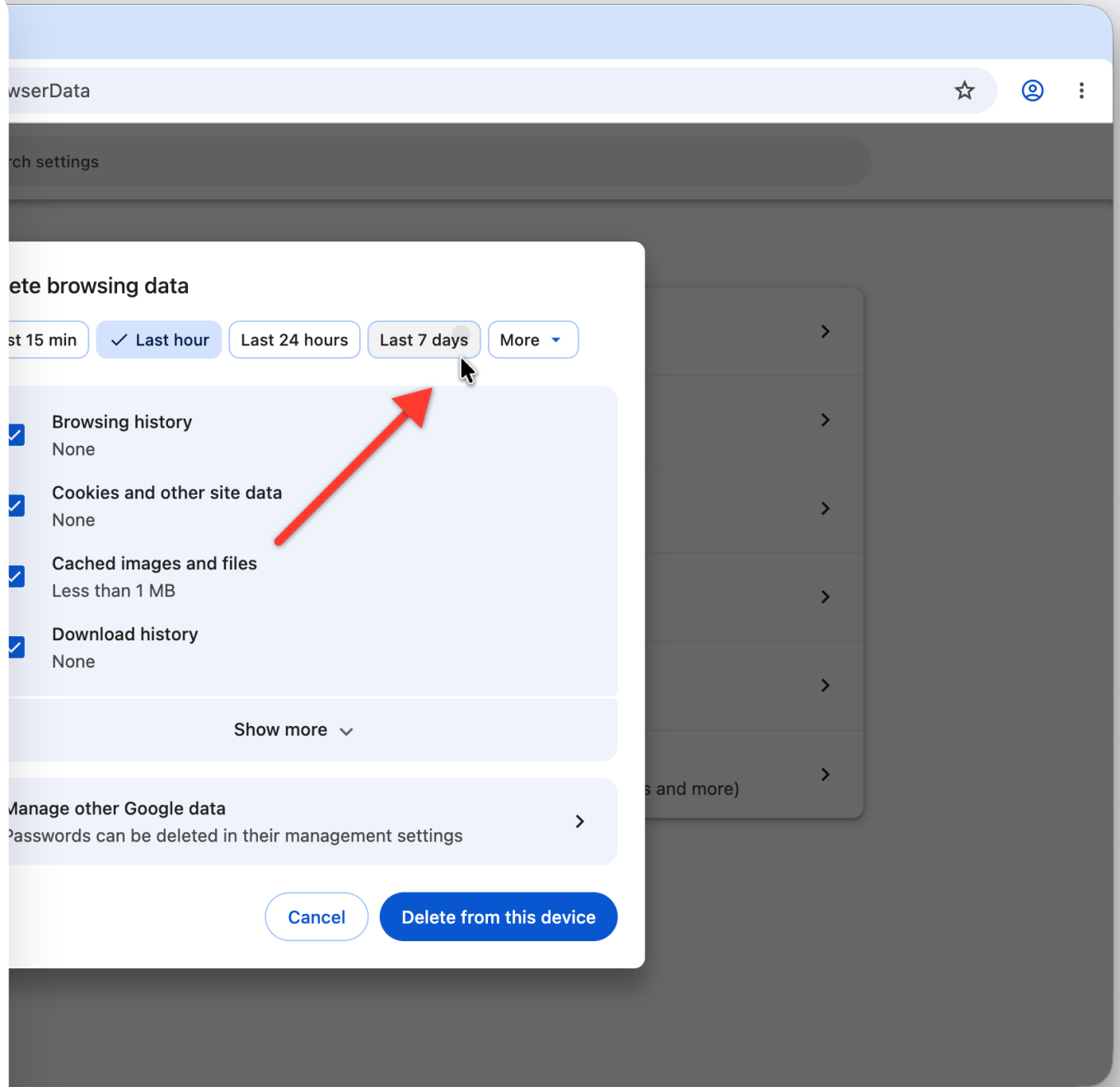
ACTION & NOTES



3 Step



ACTION & NOTES



Settings – Privacy and security x +

Chrome chrome://settings/clearBrowserData

Settings

Search settings

- You and Google
- Autofill and passwords
- Privacy and security**
- Performance
- Appearance
- Search engine
- Default browser
- On startup
- Languages
- Downloads
- Accessibility
- System
- Reset settings
- Extensions
- About Chrome

Delete browsing data

Last 15 min Last hour Last 24 hours ✓ Last 7 days More

- Browsing history
None
- Cookies and other site data
More
- Cached images and files
Less than 1 MB
- Download history
None

Show more

Manage other Google data
Passwords can be deleted in their management settings

Cancel Delete from this device

4 Step



ACTION & NOTES

guide.pdf

Settings – Privacy and security x +

Chrome chrome://settings/clearBrowserData

Settings

Search settings

- You and Google
- Autofill and passwords
- Privacy and security**
- Performance
- Appearance
- Search engine
- Default browser
- On startup
- Languages
- Downloads
- Accessibility
- System
- Reset settings
- Extensions
- About Chrome

Delete browsing data

Last 15 min Last hour Last 24 hours **✓ Last 7 days** More

- Browsing history
None
- Cookies and other site data
None
- Cached images and files
Less than 1 MB
- Download history
None

Show more

Manage other Google data
Passwords can be deleted in their management settings

Cancel Delete from this device

5 Step



ACTION & NOTES

guide.pdf

6 Step



ACTION & NOTES

guide.pdf

The screenshot shows a browser's 'Delete browsing data' dialog box. At the top, there are time range filters: 'Last 15 min', 'Last hour', 'Last 24 hours', 'Last 7 days' (selected), and 'More'. Below these are four categories of data to be deleted, each with a checkbox and a 'None' option:

- Browsing history (None)
- Cookies and other site data (None)
- Cached images and files (Less than 1 MB)
- Download history (None)

At the bottom of the dialog, there is a 'Show more' dropdown menu, a 'Manage other Google data' section with a right arrow, and two buttons: 'Cancel' and 'Delete from this device'. A red arrow points from the 'Show more' dropdown to the 'Delete from this device' button.